



GAT MONTHLY MEMBERSHIP PROGRESS REPORT

Results as of: 1/31/2022

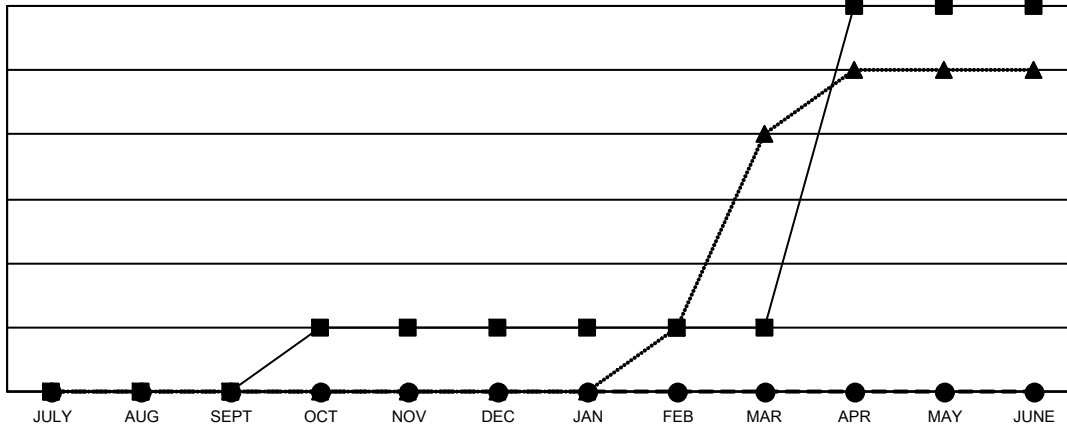
Multiple District 202

LOCATION: NEW ZEALAND

Clubs			
RESULTS FOR 2021-2022			
QUARTER	NEW CLUB GOAL	NEW CLUBS	DROPPED CLUBS
JULY/AUG/SEPT	0	0	5
OCT/NOV/DEC	1	0	3
JAN/FEB/MAR	0	0	3
APR/MAY/JUNE	5	0	0

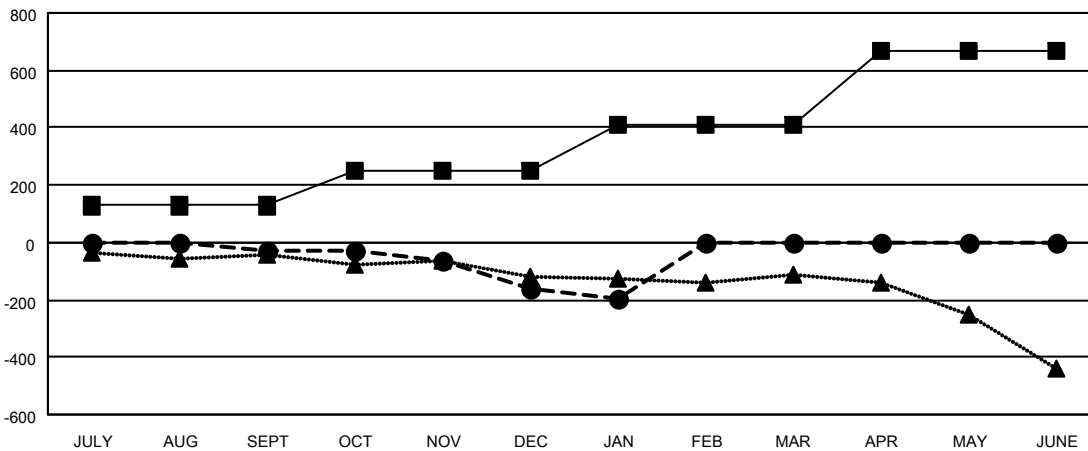
Members			
RESULTS FOR 2021-2022			
QUARTER	MEMBER GROWTH NET GOAL	MEMBER GROWTH ACTUAL	DROPPED MEMBERS ACTUAL (including transfers)
JULY/AUG/SEPT	128	180	165
OCT/NOV/DEC	123	162	268
JAN/FEB/MAR	157	23	45
APR/MAY/JUNE	257	0	0

GOALS AND ACTUAL NEW CLUBS CUMULATIVE



- CURRENT YEAR GOALS FOR NEW CLUBS
- CURRENT YEAR ACTUAL NEW CLUBS
- ▲- LAST YEAR ACTUAL NEW CLUBS

GOALS AND ACTUAL MEMBERS CUMULATIVE



- MEMBER GROWTH NET GOAL
- MEMBER GROWTH ACTUAL
- ▲- LAST YEAR MEMBERSHIP ACTUAL

DROPPED CLUBS: 11	145 CLUBS OF 323 ADDED 1 OR MORE NEW MEMBERS	GENDER DISTRIBUTION
DROPPED MEMBERS	CLICK HERE FOR CUMULATIVE MEMBERSHIP DATA	MALE 5,696 (68.39%)
DECEASED 74		FEMALE 2,632 (31.60%)
CLUB CANCELLED 4		NON BINARY 1 (0.01%)
OTHER 400		PREFER NOT TO ANSWER 0 (0.00%)
TOTAL 478		TOTAL FAMILY UNIT MEMBERS 748
		FAMILY MEMBERS PAYING HALF DUES 377